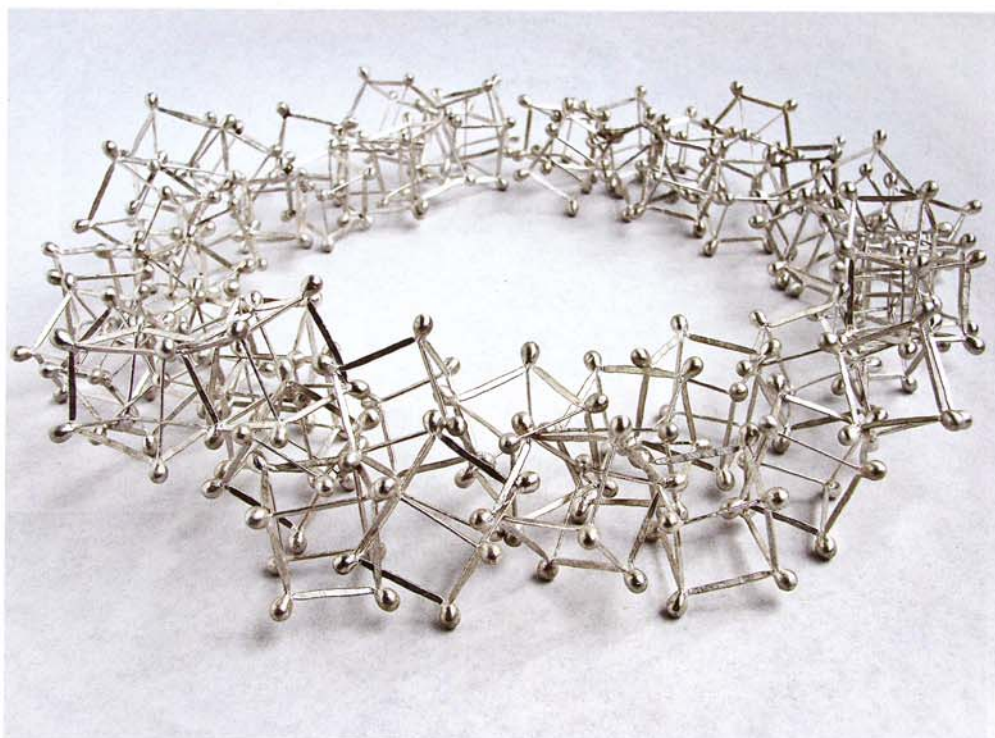


Galerie Mangold

GESPÜR FÜR MATERIALIEN

Als Podium für zeitgenössische Schmuckkunst in Leipzig vertreten Daniela und Thomas Seidel namhafte deutsche, aber auch internationale KünstlerInnen. Die kommende Weihnachtsausstellung ist Dimitar Deltchev gewidmet. „Für mich hat Schmuck architektonische und skulpturale Eigenschaften“, sagt der 1949 geborene bulgarische Künstler. Deltchev unterrichtet als Professor an der National Academy of Arts in Sofia. Sein Interesse gilt der formalen und technischen Seite des Schmuckmachens. Mit einem tiefen Gespür für Materialien legt er Wert darauf, deren Charakter zum Ausdruck zu bringen.

29. 10. 2011–13. 01. 2012
 Thomaskirchhof 17
 04109 Leipzig
www.galerie-mangold.de



Architektonisch und skulptural: Halschmuck *Quader* von Dimitar Deltchev.



3 *Bowl*-Anhänger aus Roségold 750 mit Rubin-, Feueropal- und Rosenquarz-Cabochon. Foto Atelier Zimmermann.

Erich Zimmermann

HARMONISCH VOLLENDET

In den Prinzessinnenringen werden geschliffene Edelsteine seit vielen Jahren dramaturgisch effektiv und hintersinnig inszeniert. In der neuen Serie *Bowl* ergänzt Erich Zimmermann sein Repertoire um eine neue Fassung. Dabei ist der Name Programm: Eine goldene Schale umfasst den Farbedelstein in Cabochonform. Der Eindruck von Harmonie und Vollkommenheit wird durch den warmen Farbton des Roségolds unterstrichen. Viele Steine werden direkt im Atelier Zimmermann geschliffen.

Woltramstraße 25 B
 86161 Augsburg
www.erich-zimmermann.com



Martina Ritscher

ZEST FOR COLOR

Different in terms of color and formal details yet based on the same design principle: Martina Ritscher's Murano glass earrings are complemented either by 935 silver or 900 yellow gold. The "Murano" glass is manufactured by a glass blower in Germany. With their radiant and cheerful colors, the round, oval or drop-shaped earrings created by this master goldsmith convey a keen zest for life and make for a sensuously delightful experience for the beholder.

Fischerhüttenstrasse 83
14163 Berlin
www.martina-ritscher.de

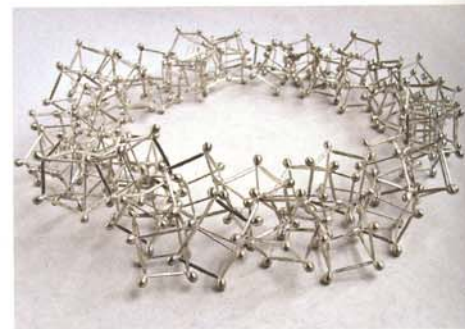


Batho Gündra

SUN AND MOON

Batho Gündra's new necklace unites geometrical clarity and organic smoothness, warm gold and cool silver. Crafted from silver, the individual elements have been plated with fine gold by means of diffusion welding on one of their formally identical sides. These bowl-shaped elements have been mounted so as to be able to rotate. The clasp does not interrupt the harmonious sequence because it is invisible. To create this piece, traditional handcraftsmanship has been complemented by machine processing, which enables manufacturing small series with an individual character. In 2011, this necklace won the *Rheinessen Crafts Design Prize*.

Parsevalstrasse 17
67549 Worms
batho.guendra@gmx.de



Mangold Gallery

A KEEN SENSE FOR MATERIALS

As a podium for contemporary art jewelry in Leipzig, Daniela and Thomas Seidel's gallery represents renowned German as well as international artists. The upcoming Christmas exhibition is dedicated to Dimitar Deltchev. "For me, jewelry has architectural and sculptural qualities," says this Bulgarian artist who was born in 1949. Deltchev, who teaches as an associate professor at the National Academy of Arts in Sofia, is interested both in the formal and the technical aspects of creating jewelry. With a keen sense for materials he sets high value on expressing their individual character.

October 29, 2011 – January 13, 2012
Thomaskirchhof 17
04109 Leipzig
www.galerie-mangold.de



Erich Zimmermann

HARMONY AND PERFECTION

Showcasing cut gemstones subtly and with striking effect in his Princess rings for many years, Erich Zimmermann has now complemented his repertoire by a new setting in his *Bowl* collection whose name speaks for itself: The colored cabochon gemstone is embraced by a golden bowl. The warm gleam of the rose gold emphasizes the impression of harmony and perfection. Many of the gemstones for Erich Zimmermann's creations are cut in his atelier by himself.

Woltramstrasse 25 B
86161 Augsburg
www.erich-zimmermann.com



Isabella Hund

ROYAL RED

In the Middle Ages, the color red was reserved for kings and queens. Monochrome surfaces with intense colors lend Michael Becker's bracelets a clear-cut appearance and striking effect. He always prefers genuine, natural gemstones if they have the desired color. But because a radiant, opaque red does not exist in mineral form, he used a synthetic pigment for this bracelet. The matte surfaces look very much like gemstones, both in terms of solidity and the color's effect. The austere, architectural language of form is a signature feature of Michael Becker's creations.

Frauenplatz 13
Entrance on Schäfflerstrasse
80331 Munich
www.isabella-hund.de



Antje Liebscher

PLAYING WITH WEARING VARIANTS

Antje Liebscher's *OVB 21 chain necklace* is composed of a sequence of pink gold-plated silver ovals with an overall graphic appearance. A spiral clasp enables the wearer to vary it according to her individual liking and wear it either short or long or shaped as a Y.

Kutschergasse 8
67346 Speyer
www.antjelietscher.de